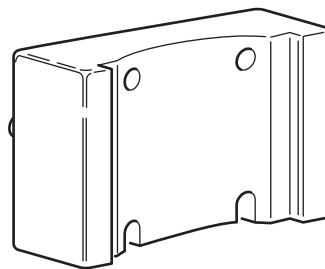
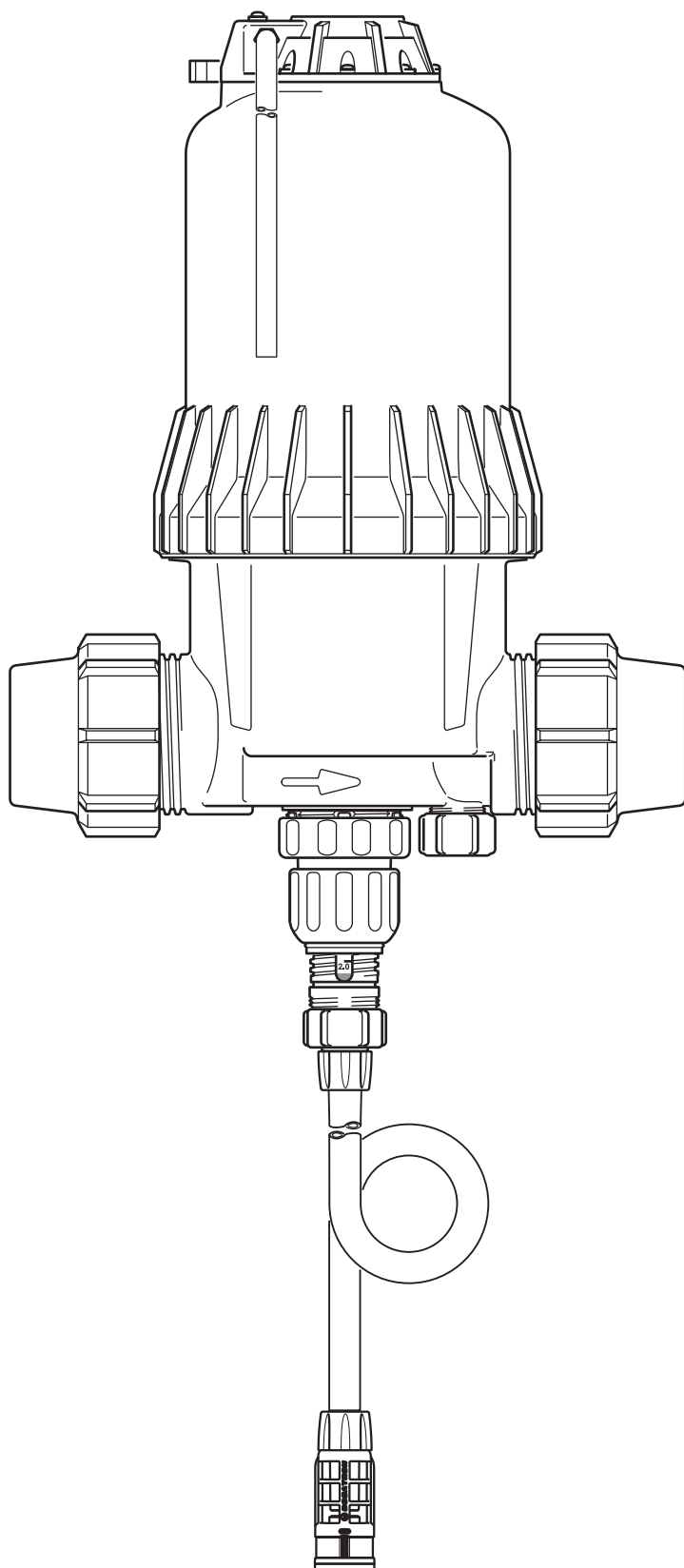


## D8R

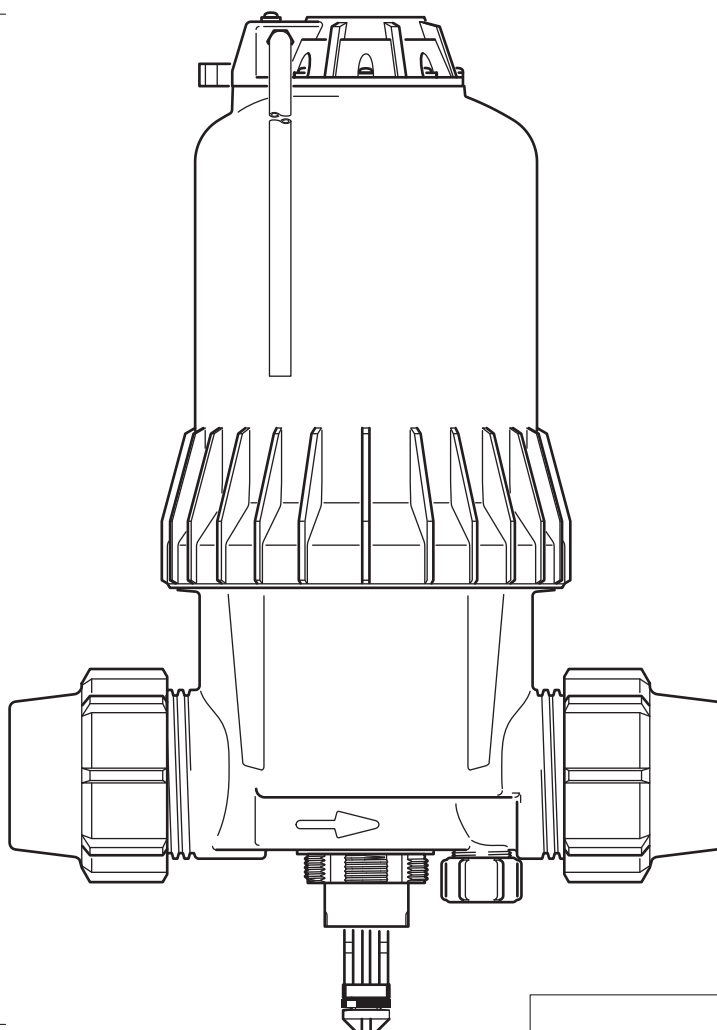
8 m<sup>3</sup>/h - 0.2 - 2%  
40 GPM - 1:500 - 1:50  
0.15 - 8 bar  
2.2 - 116 psi



**D8R**

**C+M**

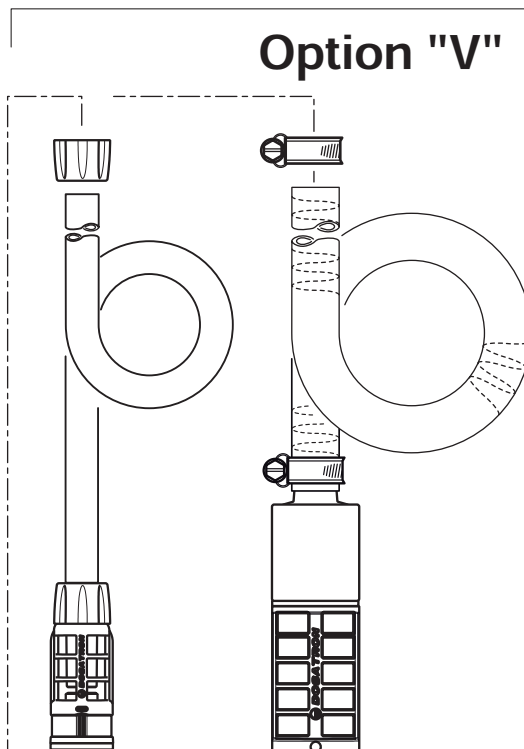
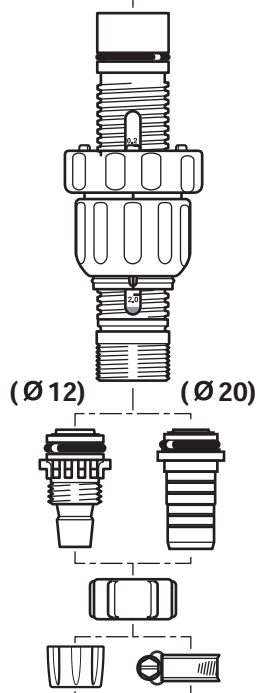
8 m<sup>3</sup>/h - 0.2 - 2%  
 40 GPM - 1:500 - 1:50  
 0.15 - 8 bar  
 2.2 - 116 psi



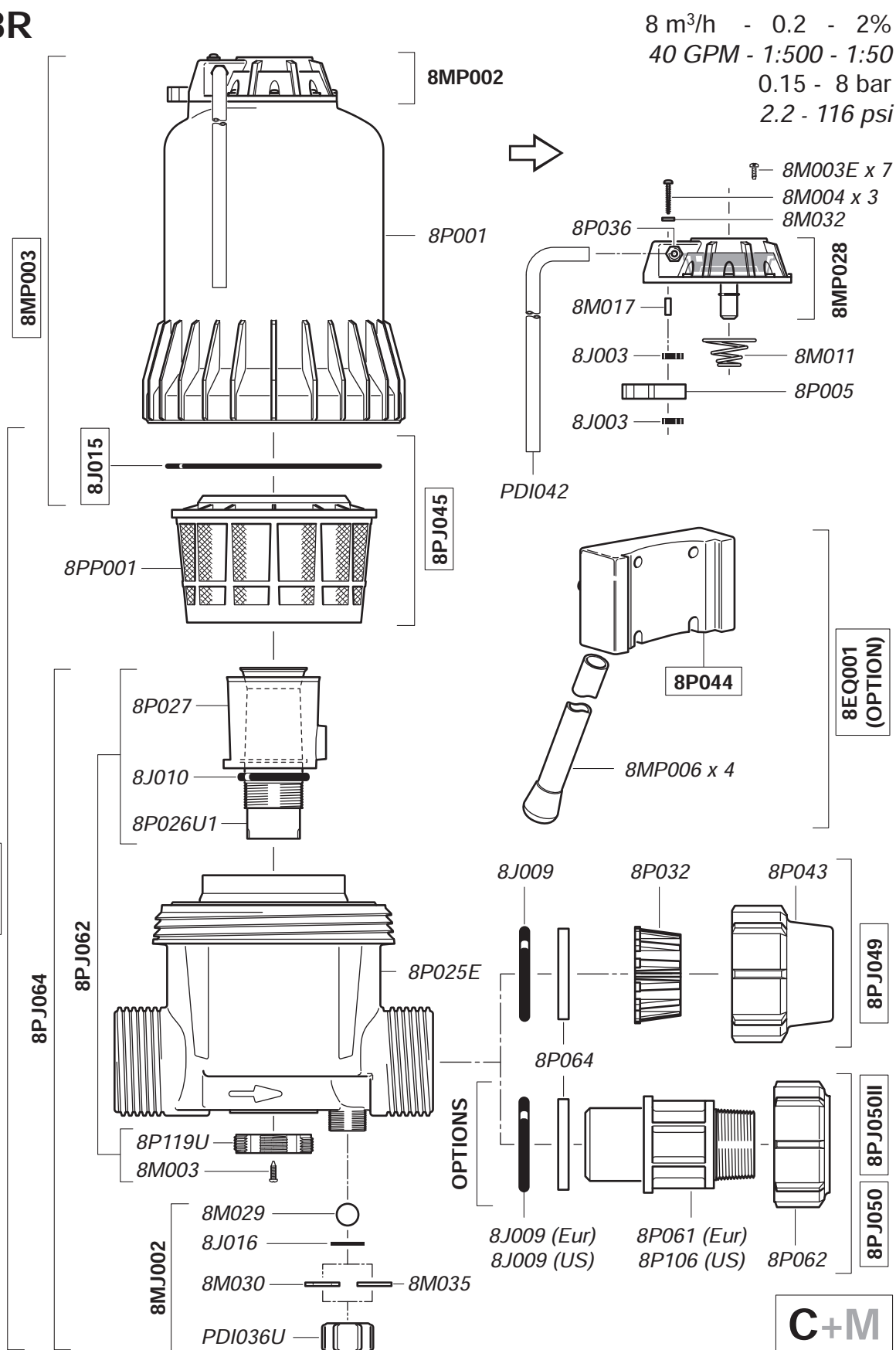
**A**

**Option "V"**

**D**

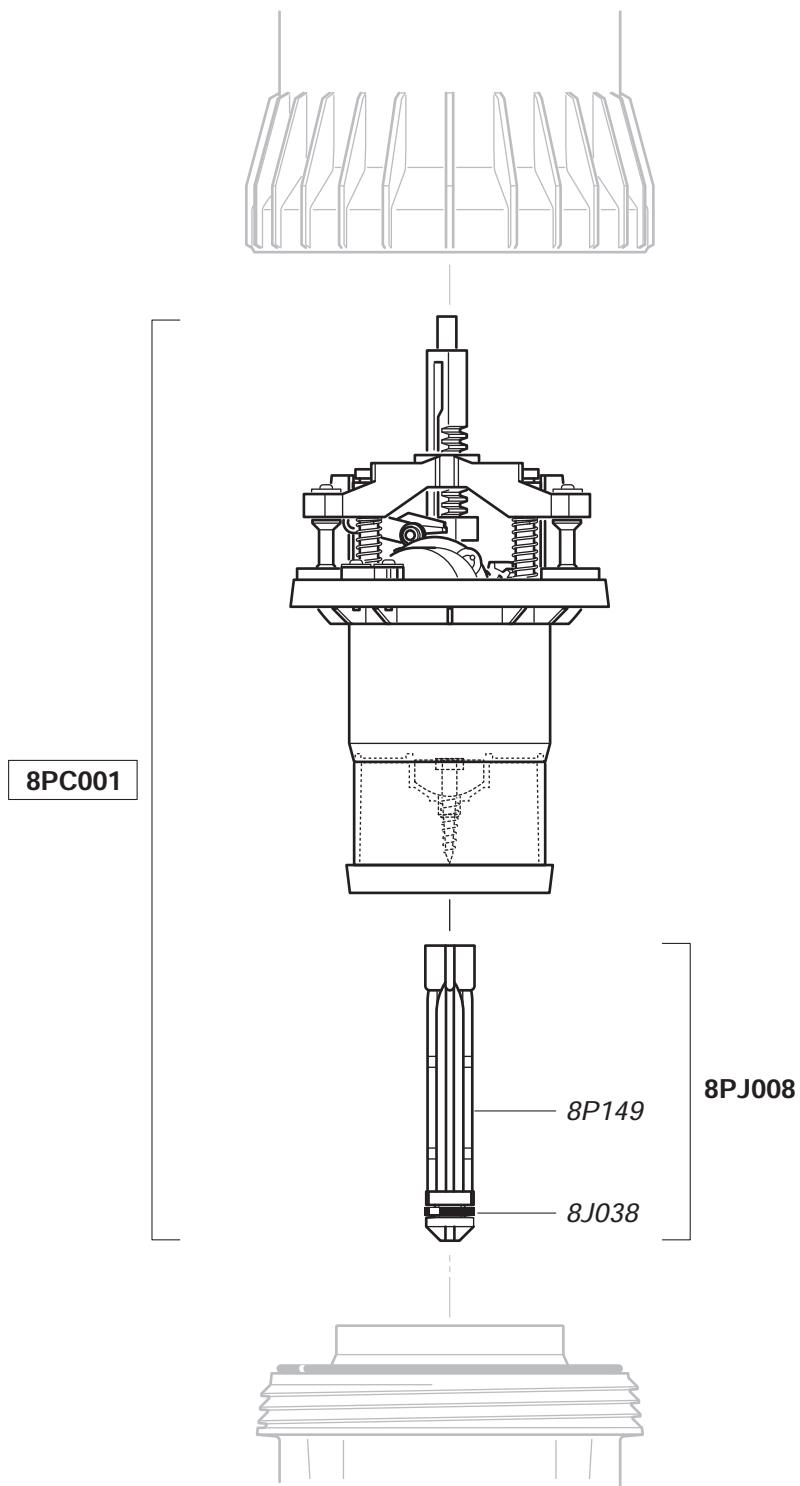


© DOSATRON INTERNATIONAL S.A.S. 2013  
D08R/0713/D3



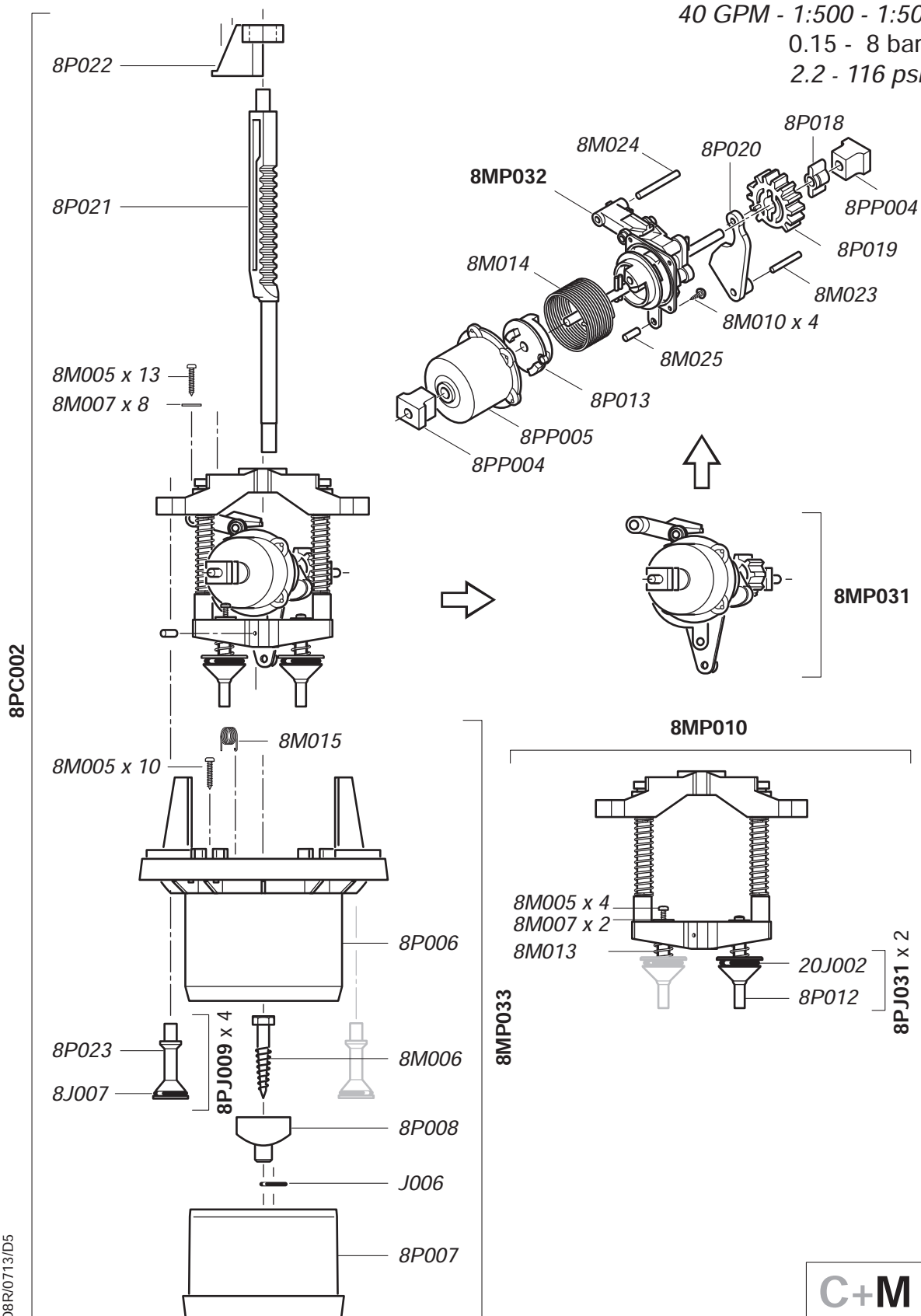
# D8R

8 m<sup>3</sup>/h - 0.2 - 2%  
40 GPM - 1:500 - 1:50  
0.15 - 8 bar  
2.2 - 116 psi



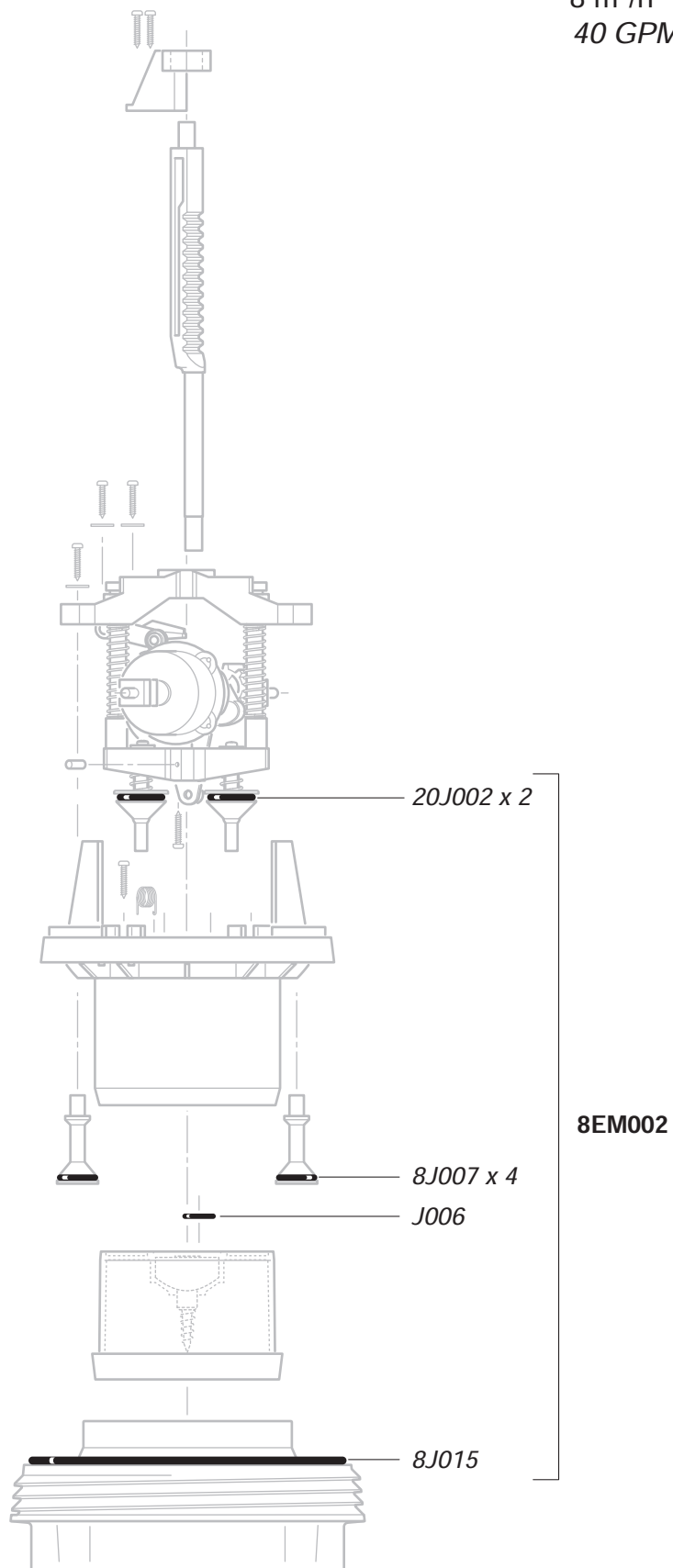
© DOSATRON INTERNATIONAL S.A.S. 2013  
D8R/0713/D5

**C+M**



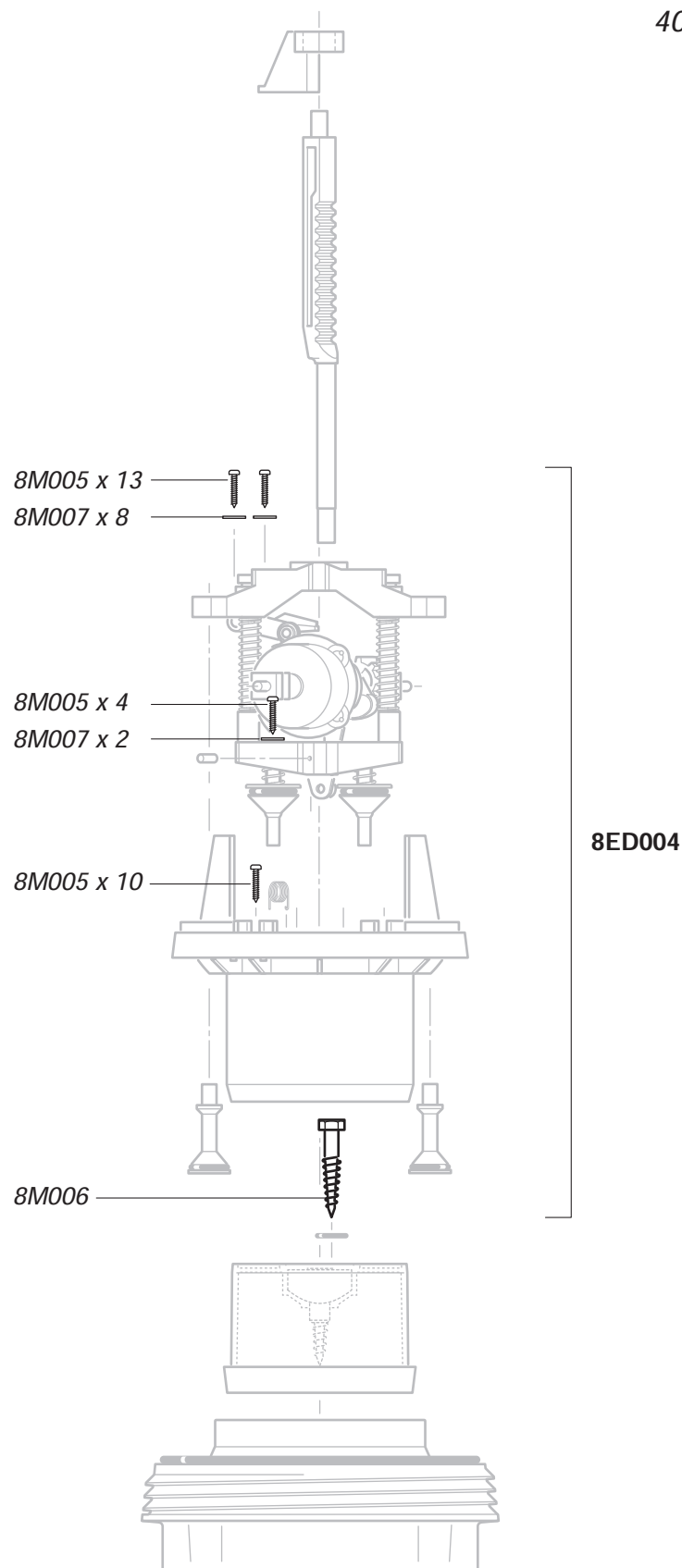
# D8R

8 m<sup>3</sup>/h - 0.2 - 2%  
 40 GPM - 1:500 - 1:50  
 0.15 - 8 bar  
 2.2 - 116 psi



# D8R

8 m<sup>3</sup>/h - 0.2 - 2%  
 40 GPM - 1:500 - 1:50  
 0.15 - 8 bar  
 2.2 - 116 psi



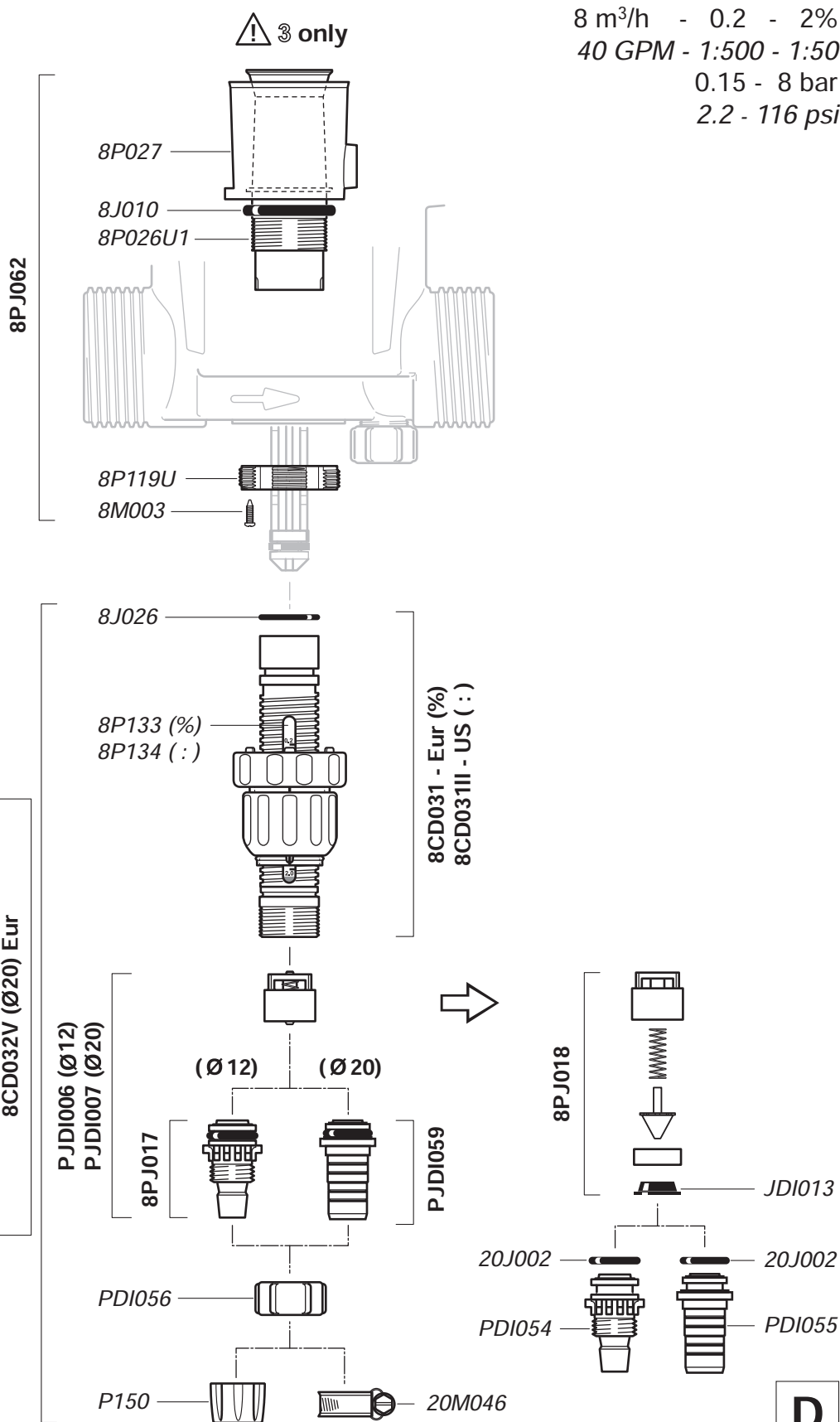
# D8R

8 m³/h - 0.2 - 2%  
40 GPM - 1:500 - 1:50  
0.15 - 8 bar  
2.2 - 116 psi

© DOSATRON INTERNATIONAL S.A.S. 2013  
D8R/0713/D8

8CD023 (Ø12) Eur - 8CD023II (Ø12) US  
8CD023V (Ø20) Eur

8CD032 (Ø12) Eur - 8CD032II (Ø12) US  
8CD032V (Ø20) Eur



D

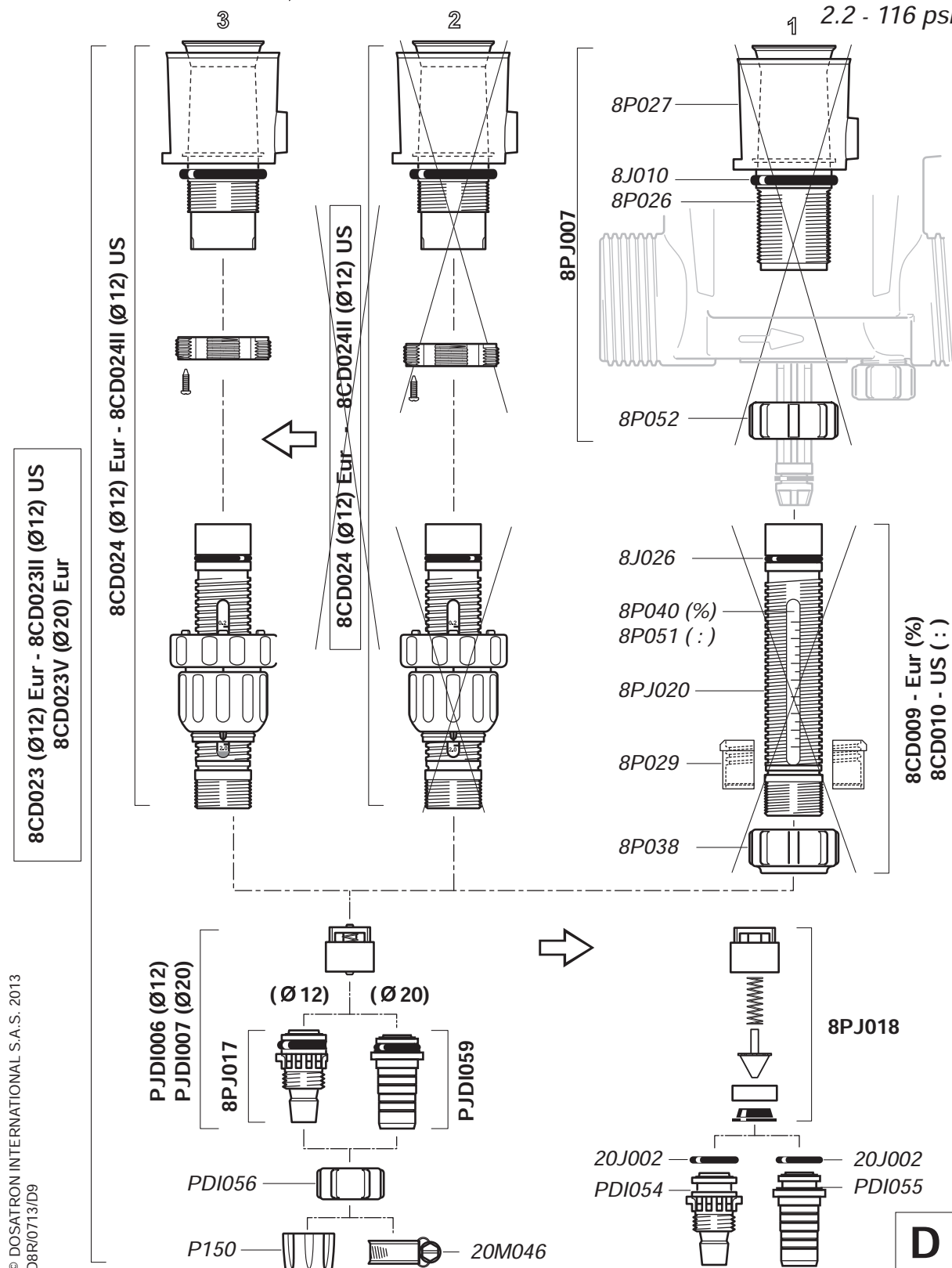


# D8R

Export N° 0401 ... ➔  
France N° 04030711 ➔

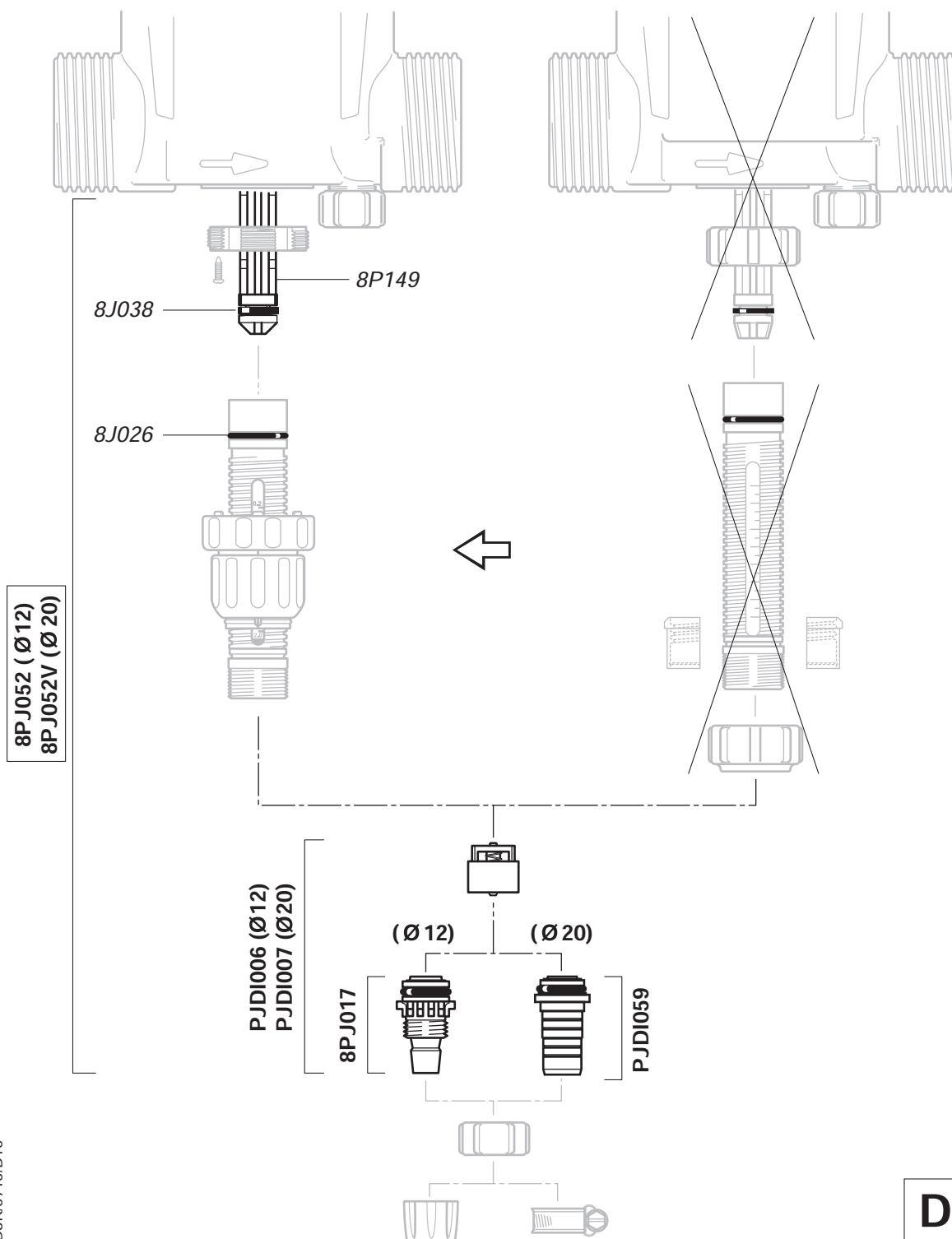
N° 03022007 ➔

8 m<sup>3</sup>/h - 0.2 - 2%  
40 GPM - 1:500 - 1:50  
0.15 - 8 bar  
2.2 - 116 psi



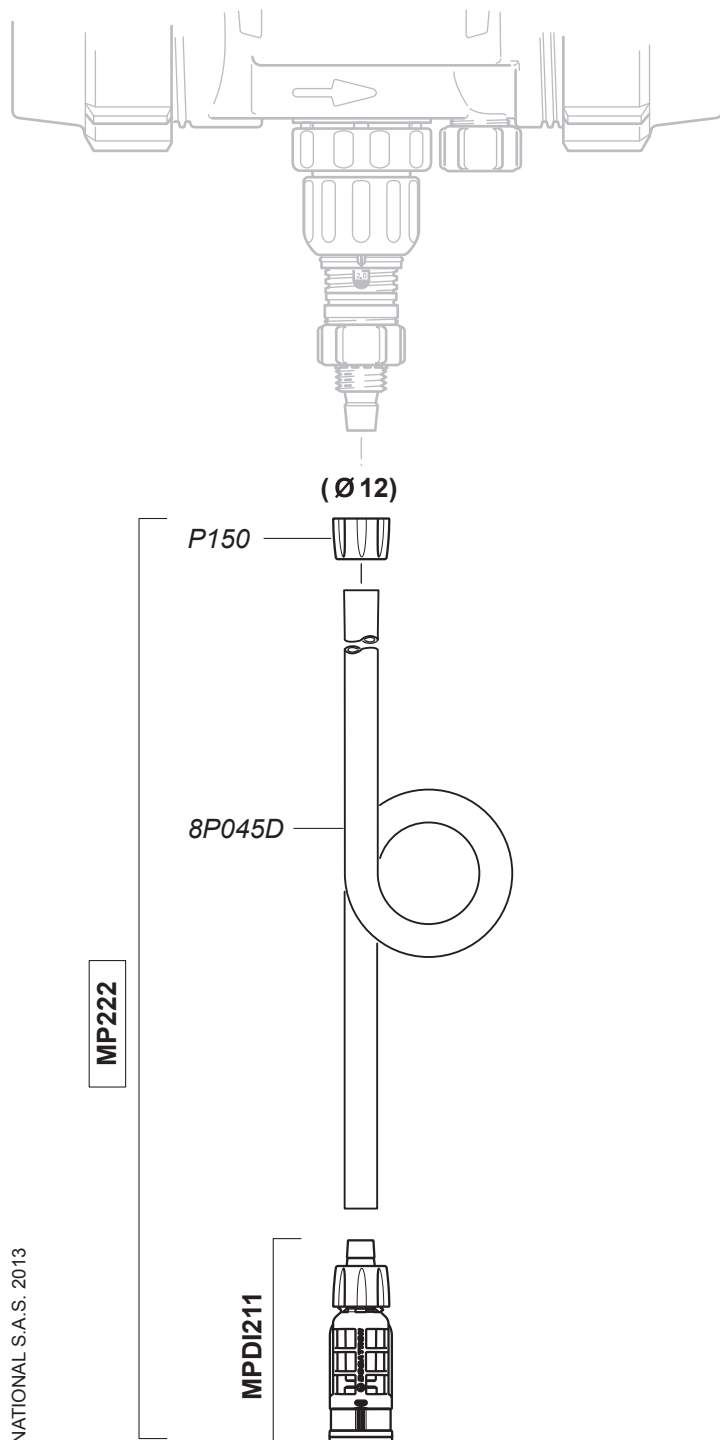
# D8R

8 m<sup>3</sup>/h - 0.2 - 2%  
 40 GPM - 1:500 - 1:50  
 0.15 - 8 bar  
 2.2 - 116 psi



# D8R

8 m<sup>3</sup>/h - 0.2 - 2%  
 40 GPM - 1:500 - 1:50  
 0.15 - 8 bar  
 2.2 - 116 psi



## Option "V"

